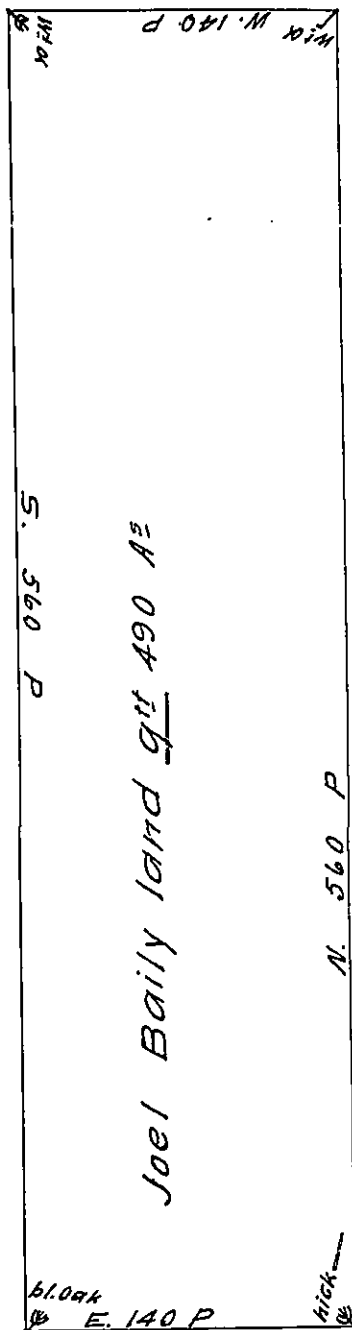


Ebenezer Empson Land



James Cooper Land

By virtue of a Warrant to me directed dated ye 7-1-m. 1701
I have survd unto Joel Baily a tract of land in Nottingham
beginning at a corner hickery being a corner ^{hickery} of James Cooper's
land thence by his line North 560 pch to a corner white oak thence
West 140 perch to a corner white oak being a corner of Ebenezer
Empson's land then by his line South 560 pch to a corner
Black oak thence East 140 pch to ye place of beginning containing
490 acres of land the 15th day of the 3^d month 1702.

Henry Hollingsworth —

IN TESTIMONY that the above is a copy of the original remaining on file in
the Department of Internal Affairs of Pennsylvania, made
conformably to an Act of Assembly approved the 16th day of
February, 1833, I have hereunto set my Hand and caused
the Seal of said Department to be affixed at Harrisburg,
this twenty second day of April 1910

Henry Howell
Secretary of Internal Affairs.